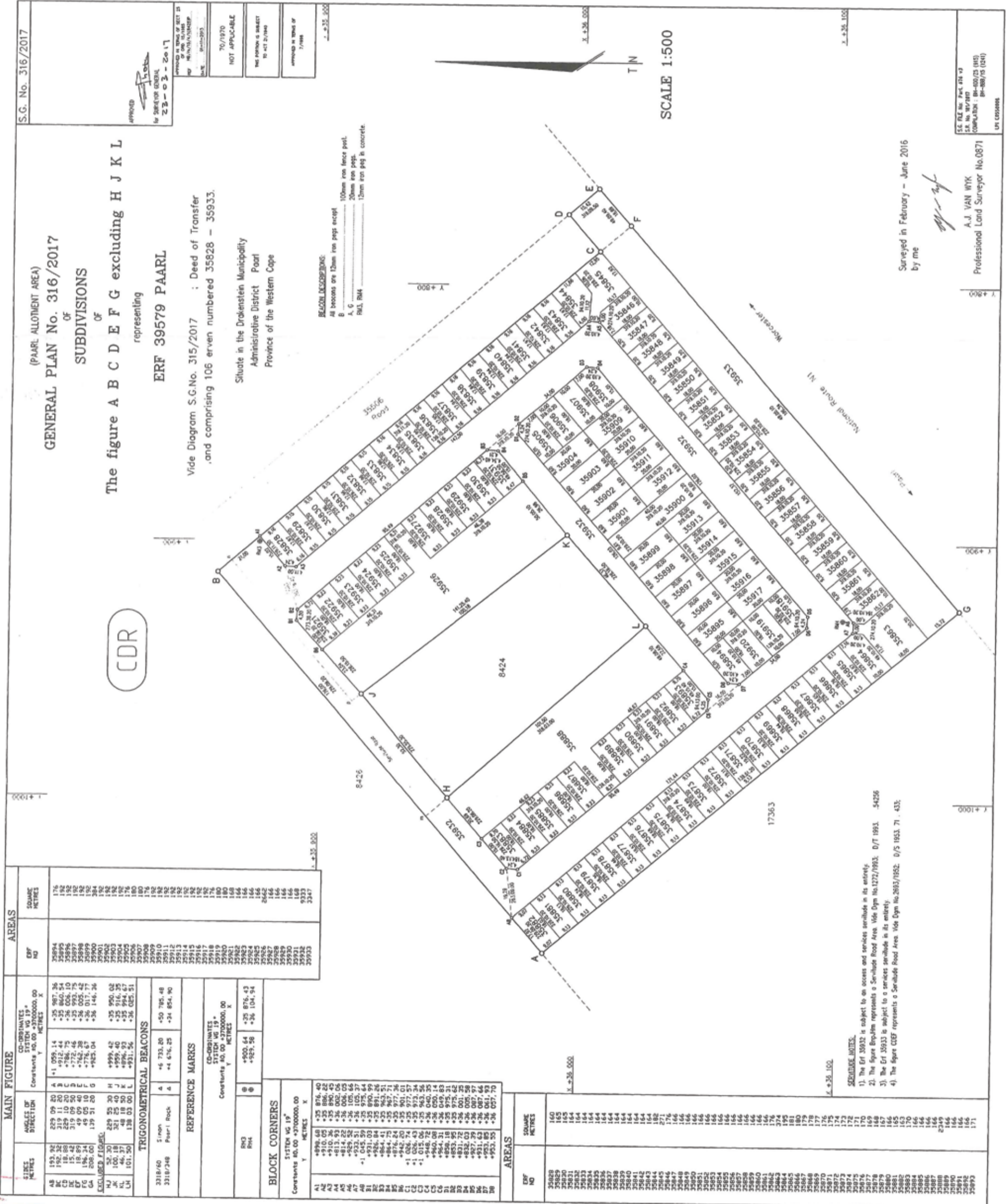


# BERGVLIET MANOR

## GENERAL PLAN



MAIN FIGURE		AREAS	
SIZES METRES	ANGLES OF DIRECTION	COORDINATES STATION NO. 19	ERF NO
193.36	269 09 20	+1 059.14	35894
192.26	319 11 20	+35 987.34	35895
192.26	319 11 20	+35 987.34	35896
192.26	319 11 20	+35 987.34	35897
192.26	319 11 20	+35 987.34	35898
192.26	319 11 20	+35 987.34	35899
192.26	319 11 20	+35 987.34	35900
192.26	319 11 20	+35 987.34	35901
192.26	319 11 20	+35 987.34	35902
192.26	319 11 20	+35 987.34	35903
192.26	319 11 20	+35 987.34	35904
192.26	319 11 20	+35 987.34	35905
192.26	319 11 20	+35 987.34	35906
192.26	319 11 20	+35 987.34	35907
192.26	319 11 20	+35 987.34	35908
192.26	319 11 20	+35 987.34	35909
192.26	319 11 20	+35 987.34	35910
192.26	319 11 20	+35 987.34	35911
192.26	319 11 20	+35 987.34	35912
192.26	319 11 20	+35 987.34	35913
192.26	319 11 20	+35 987.34	35914
192.26	319 11 20	+35 987.34	35915
192.26	319 11 20	+35 987.34	35916
192.26	319 11 20	+35 987.34	35917
192.26	319 11 20	+35 987.34	35918
192.26	319 11 20	+35 987.34	35919
192.26	319 11 20	+35 987.34	35920
192.26	319 11 20	+35 987.34	35921
192.26	319 11 20	+35 987.34	35922
192.26	319 11 20	+35 987.34	35923
192.26	319 11 20	+35 987.34	35924
192.26	319 11 20	+35 987.34	35925
192.26	319 11 20	+35 987.34	35926
192.26	319 11 20	+35 987.34	35927
192.26	319 11 20	+35 987.34	35928
192.26	319 11 20	+35 987.34	35929
192.26	319 11 20	+35 987.34	35930
192.26	319 11 20	+35 987.34	35931
192.26	319 11 20	+35 987.34	35932
192.26	319 11 20	+35 987.34	35933

BLOCK CORNERS	
STATION NO. 19	COORDINATES
A1	+896.48
A2	+910.05
A3	+35 876.40
A4	+35 880.49
A5	+35 884.58
A6	+35 888.67
A7	+35 892.76
A8	+35 896.85
A9	+35 900.94
A10	+35 905.03
A11	+35 909.12
A12	+35 913.21
A13	+35 917.30
A14	+35 921.39
A15	+35 925.48
A16	+35 929.57
A17	+35 933.66
A18	+35 937.75
A19	+35 941.84
A20	+35 945.93
A21	+35 950.02
A22	+35 954.11
A23	+35 958.20
A24	+35 962.29
A25	+35 966.38
A26	+35 970.47
A27	+35 974.56
A28	+35 978.65
A29	+35 982.74
A30	+35 986.83
A31	+35 990.92
A32	+35 995.01
A33	+35 999.10
A34	+36 003.19
A35	+36 007.28
A36	+36 011.37
A37	+36 015.46
A38	+36 019.55
A39	+36 023.64
A40	+36 027.73

AREAS	
ERF NO	SQUARE METRES
35828	160
35829	165
35830	164
35831	164
35832	164
35833	164
35834	164
35835	164
35836	164
35837	164
35838	164
35839	164
35840	164
35841	164
35842	164
35843	164
35844	164
35845	164
35846	164
35847	164
35848	164
35849	164
35850	164
35851	164
35852	164
35853	164
35854	164
35855	164
35856	164
35857	164
35858	164
35859	164
35860	164
35861	164
35862	164
35863	164
35864	164
35865	164
35866	164
35867	164
35868	164
35869	164
35870	164
35871	164
35872	164
35873	164
35874	164
35875	164
35876	164
35877	164
35878	164
35879	164
35880	164
35881	164
35882	164
35883	164
35884	164
35885	164
35886	164
35887	164
35888	164
35889	164
35890	164
35891	164
35892	164
35893	164
35894	164
35895	164

TRIGONOMETRICAL BEACONS	
STATION NO. 19	COORDINATES
3318/60	+5 733.20
3318/348	+4 676.25

REFERENCE MARKS	
STATION NO. 19	COORDINATES
35900	+900.64
35901	+905.56
35902	+36 876.43
35903	+36 104.54

SERVICES NOTES	
1.	The Erf 35832 is subject to an access and services servitude in its entirety.
2.	The figure B is subject to a servitude in its entirety.
3.	The Erf 35833 is subject to a servitude in its entirety.
4.	The figure C is subject to a servitude in its entirety.

DATE 24/03/2017

FOR SURVEYOR GENERAL

CERTIFIED COPY FOR REGISTRATION